

JOB DESCRIPTION **QUALIFIED LANDSCAPER**

Brief description:

Intrinsic Landscapes provides landscape construction and development to (primarily) high-end residential landscapes. Reporting to the Site Supervisor, the Qualified Landscaper will work as part of a multi-skilled landscape project management and construction team, and will work on the construction of landscape projects around Melbourne.

Roles and responsibilities include:

- Work under the supervision of Intrinsic Landscapes Site Supervisors and the Director, in the construction of residential and commercial landscaping, and completion of restoration projects
- Construction of hard and soft works such as paving, cladding, decking, pergolas and awnings, retaining walls, concreting, lighting, irrigation, planting and more
- Interpret landscape documentation, designs and specifications
- Provide support to the Site Supervisor with training Apprentices
- Select optimal plant and equipment to efficiently complete various projects
- Work with your Site Supervisor to identify and implement time and cost improvements on current operations
- Adhere to project schedules and provide regular status updates to the Director and Site Supervisor
- Calculate and order materials through the appropriate suppliers and subcontractors
- Work within Occupational Health and Safety policy and procedures to ensure a safe work place.

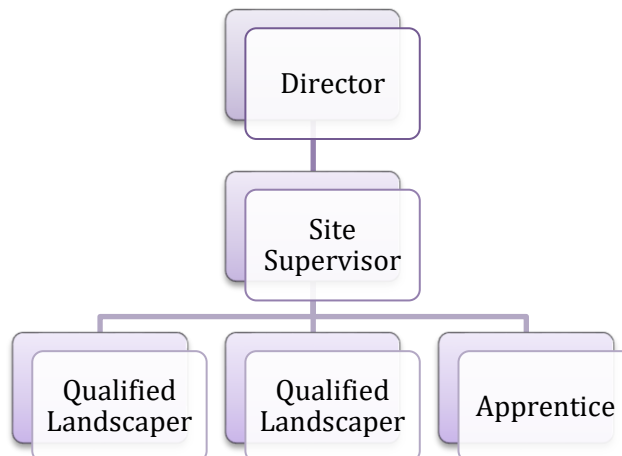
Important qualities for successful execution of the position include:

- Minimum Certificate III in Landscape Construction or Horticulture and at least 3 years' experience in landscape construction
- The ability to complete landscape construction work to a very high standard
- Ability to "lead from the front" and mentor Apprentices
- Honesty, self-motivation, the ability to work independently and a solid work ethic
- Excellent interpersonal, communication, and teamwork skills
- Experience and ability to work with a wide range of stakeholders
- Attention to detail and thoroughness in completing work tasks
- Good written, oral and personal presentation
- Previous experience in Xero and Zoho Projects software is ideal but not essential
- Current drivers licence and reliable vehicle
- Construction industry white card
- Bobcat, medium rigid truck, excavator tickets and licences preferred
- First aid preferred

Core Values (in order of importance):

- Professionalism – punctuality, discipline, good communication, customer service and excellent company representation
- Integrity – honesty, openness, loyalty and trust
- Pride – pride in appearance, work standards, a strong work ethic, cleanliness and organisational skills
- Creativity/Innovation – effective multi-tasking and problem-solving capabilities, ability to think outside the square, an aptitude for generating new ideas and methods
- Cooperation/Fun – being positive and pleasant with others on the job and displaying a good-natured, cooperative attitude to maintain an enjoyable workplace.
- Accountability – Living the company core values, helping other employees to do this, keep others accountable, provide honest reporting to the Site Supervisor and Director.

Lines of reporting:



Working conditions:

This role is a permanent full-time position. Working hours are 7.00am to 5.00pm Monday to Thursday. Overtime is payable at Award rates.